

San Dieguito River Park
 Joint Powers Authority
 18372 Sycamore Creek Road
 Escondido, CA 92025
 (858) 674-2270 Fax (858) 674-2280
 www.sdrp.org

**JOINT POWERS AUTHORITY
 BOARD OF DIRECTORS**

Chair Joe LaCava
 San Diego City Council

Vice-Chair Chris Khoury
 Citizens Advisory Committee

Brian Pepin
 Poway City Council

Dwight Worden
 Del Mar City Council

Consuelo Martinez
 Escondido City Council

Marni von Wilpert
 San Diego City Council

Joel Anderson
 Supervisor, County of San Diego

Terra Lawson-Remer
 Supervisor, County of San Diego

Jill MacDonald
 Solana Beach City Council

Dustin Fuller, Ex Officio
 22nd District Agricultural
 Association

Shawna Anderson
 Executive Director

**SAN DIEGUITO RIVER PARK
 JOINT POWERS AUTHORITY
 11:00 a.m.
 Friday, June 21, 2024
 County Administration Center
 1600 Pacific Highway, San Diego
 Room 302/303**

Speaker slips will be available. Please fill out a slip and give it to the Chair prior to the meeting if you wish to speak about an item on the agenda. The Board may act on any item listed on the Consent or Action Agenda.

Introductions and Announcements

Pledge of Allegiance

Approval of the Minutes of May 17, 2024 (Page 3-7)

Executive Director's Report

CAC Report

Public Comment

This portion of the agenda provides an opportunity for members of the public to address the Board on items of interest within the jurisdiction of the Board and not appearing on today's agenda. Comments relating to items on today's agenda are to be taken at the time the item is heard. Pursuant to the Brown Act, no action shall be taken by the Board on public comment items.

DISCUSSION/ACTION

1. Coast to Crest Trail Gap Presentation – Sutherland Segment (page 8-11)

INFORMATION

2. Project Status Updates
 - a. Osuna Segment of Coast to Crest Trail
 - b. Reach the Beach Fairgrounds Trail and Gateway
 - c. San Dieguito Lagoon Phase II Restoration (aka W-19)
 - d. CTC Trail - East San Pasqual and Sutherland Gaps Project
3. Coordination Reports (oral)
 - a. San Dieguito River Valley Conservancy
 - b. Friends of the San Dieguito River Valley
 - c. Volcan Mountain Foundation
 - d. San Dieguito Lagoon Committee
4. Jurisdictional Status Reports (oral)

An opportunity for the Board members to report on actions taken within their jurisdiction to further the park planning process.
5. Correspondence
 - a. Department of the Army response letter to SCE
 - b. JPA letter to the Senate Budget Committee
 - c. 22nd Agricultural District response to Damage to the Coast to Crest Trail
 - d. JPA letter in response to 22nd Agricultural District damage to the Horsepark segment of the Coast to Crest Trail.
6. Closed session with legal counsel pursuant to California Government Code Sec. 54956.9(d)(4) regarding potential litigation regarding damage to Coast to Crest Trail.

THE NEXT REGULAR JPA MEETING will be July 19, 2024. If you have any questions, please contact Dewanda Vandermost at dewanda@sdrp.org or (858)674-2270

**SAN DIEGUITO RIVER PARK
JOINT POWERS AUTHORITY
Minutes of May 17, 2024**

MEMBERS PRESENT

Joe LaCava - Chair
Chris Khoury – Vice Chair
Brian Pepin
Dwight Worden
Marni von Wilpert
Consuelo Martinez
Jill MacDonald

REPRESENTING

City of San Diego District 1
Citizens Advisory Committee
City of Poway
City of Del Mar
City of San Diego Dist. 5
City of Escondido
City of Solana Beach

MEMBERS ABSENT

Terra Lawson-Remer
Joel Anderson
Dustin Fuller

REPRESENTING

County of San Diego Dist. 3
County of San Diego Dist. 2
22nd Agricultural District, Ex Officio

VISITORS/STAFF PRESENT

Shawna Anderson
Dewanda Vandermost
Wayne Brechtel
Lizzy Bendrick
Matthew Tillyer
Quinton Grounds
Shravani Singavarapu
Abbey Reuter
Anabella Gonzales

REPRESENTING

San Dieguito River Park JPA
San Dieguito River Park JPA
San Dieguito River Park JPA, General Counsel
County Parks & Recreation Department
County of San Diego Dist. 3
City of San Diego Dist. 5
City of San Diego Public Utilities Department
City of San Diego District 1
City of San Diego

Introduction and Announcements:

Chair LaCava convened the meeting at 11:05 a.m. A roll call was taken and a quorum of seven board members were present to begin the meeting.

Pledge of Allegiance

Approval of the Minutes of April 19, 2024

Board Member von Wilpert moved to approve the minutes and Board Member MacDonald seconded the motion. All in favor.

Yes votes: LaCava, Khoury, Pepin, MacDonald, Worden, vonWilpert, Martinez

No votes: None

Absent: Lawson-Remer, Anderson

Abstain: None

Executive Director's Report

Executive Director Anderson reminded board members of the upcoming JPA/Conservancy volunteer appreciation party to be held at Sikes Adobe Farmstead, May 19th.

CAC Chair's Report

Vice Chair Khoury provided an update on discussions related to the water level of Lake Hodges. He shared information from Meagan Hickey, San Diego City Public Utilities Dept. regarding recent actions for the City's Hodges Dam replacement project and confirmed the water level restrictions would remain at the state mandated 280 ft. until the new dam construction is complete.

Executive Director Anderson informed the board that the Citizens Advisory Committee unanimously approved a motion recommending that the JPA board investigate the impact of the 280-foot lake level on the San Dieguito River Valley's environmental and recreational resources.

Legal counsel advised that agendaing the topic for board discussion was appropriate. The Board confirmed that the topic would be included on the next JPA agenda. Board Member von Wilpert offered to have San Diego City PUD staff present to offer their knowledge and assist with the review.

Public Comment – No public comments received.

DISCUSSION/ACTION

1. County of San Diego – Neighborhood Reinvestment Program: Outdoor Equity Access Vehicle and Trailer

Recommendation: Approve application and resolution for Neighborhood Reinvestment Program Grant.

Executive Director Anderson provided specifics of the proposed JPA grant application for this County program including utility vehicle specifications, storage, and usage. Anderson shared that an anonymous donor from the Friends of Sikes Adobe will donate a match of \$15,000 toward the purchase of the vehicle. Chair LaCava asked that the anonymous donor be thanked from the JPA Board for their grant match.

Director Anderson responded to questions and added clarification for the following:

- Trail Compatibility: The vehicle is electric and is capable of handling off-road terrain; however, it is not suitable for the ranger's trail maintenance needs.
- Street Legality: The vehicle is not street legal. However, the proposal includes a trailer for hauling the UTV to other areas within the park

- **Charging Facilities:** The vehicle uses 110 amperage and will be charged at the lagoon ranger station.
- **Application Details:** The board acknowledged an error in the application form for total expenditures that will be corrected prior to grant submittal.

Public Comment- no public comment

Board Member Worden moved to approve the application and resolution for the Neighborhood Reinvestment Program Grant. Board Member Martinez seconded the motion. All in favor.

Yes votes: LaCava, Khoury, MacDonald, Worden, vonWilpert, Martinez

No votes: None

Absent: Lawson-Remer, Anderson, Pepin

Abstain: None

2. **Proposed FY24-25 JPA Budget**

Recommendation: Consider and Approve Proposed FY24-25 Budget

Executive Director Anderson explained the details of the proposed FY24-25 operations budget and the 2024 Coast Budget.

- **Member Agency Contributions:**
 - Notably, the proposed budget for the fiscal year 2024-2025 does not increase member agency contributions over the current (FY2023-24) amounts.
- **Conservation Easement Proceeds:**
 - Director Anderson's recommendation that the unallocated balance of \$54,694 for the Sycamore Westridge conservation easement be deposited into the operations endowment fund, allowing for the final decision to be deferred to the Board.
- **New Revenue Sources:**
 - The San Dieguito River Valley Conservancy announced a contribution of \$25,000 to the operations fund and is in discussions with JPA to continue the contribution for the next five years. The \$25,000 is included in the proposed budget.
 - The Conservancy has been funding 2/5 of the JPA's interpretive ranger salary since 2021 based on an annual MOU with the JPA. Executive Director Anderson explained that this funding source is short-term, and the assumption is the JPA will transition to the responsibility of full-time funding for this position once the Conservancy's contribution concludes.
- **Loan Repayment for Ranger Station Construction:**
 - The proposed budget includes an annual loan repayment of \$44,362 for a loan secured by the JPA in February 2018 to fund the construction of the Ranger station.
 - Previously, the annual fee was partially covered by the coast budget, utilizing a \$48,000 temporary office fee. This fee expired in 2022.

- The idea of re-evaluating the loan and considering refinancing was discussed. Staff agreed to investigate this.
- **Bylaws JEPA Committee:**
 - In response to recent challenges posed by high inflation factors and the 5% cap, the Board established a bylaws JEPA committee. Committee members include board members LaCava, Worden, and alternate Kazmer. A meeting for this committee will be scheduled soon.

Public Comment- no public comment

Board Member Worden moved to approve the proposed FY24-25 JPA Budget with the unallocated balance of \$54,694 from the Sycamore Westridge conservation easement to be held in JPA account for future allocation. Board Member Martinez seconded the motion. All in favor.

Yes votes: LaCava, Khoury, MacDonald, Worden, vonWilpert, Martinez, Pepin

No votes: None

Absent: Lawson-Remer, Anderson

Abstain: None

INFORMATION

3. Project Status Updates

- a) **Osuna Segment of Coast to Crest Trail** – no report
- b) **Reach the Beach Fairgrounds Trail** – no report
- c) **San Dieguito Lagoon Phase II Restoration (aka W-19)** – SDRP Staff will attend the June 5th, 2024 inlet opening. A ribbon-cutting ceremony for the new wetlands and trail is being planned for September/October 2024. Board member Worden asked that a W-19 presentation for performance criteria be added as a future agenda item and include a representative from SANDAG.
- d) **CTC Trail – East San Pasqual and Sutherland Gaps Project** – Project consultant team in coordination with JPA Staff are actively working on the Sutherland alignment and three options for the East San Pasqual alignment. These will be presented at the upcoming board and CAC meetings in June or July.

4. Coordination Reports (oral)

- a. **San Dieguito River Valley Conservancy** -no report
- b. **Friends of the San Dieguito River Valley**- no report
- c. **Volcan Mountain Foundation** – no report
- d. **San Dieguito Lagoon Committee**- no report

-
5. **Jurisdictional Status Reports** – Board member Worden reported on two important meetings he recently attended, which are:
- University of Santa Barbara presentation on the mitigation performance of Southern California Edison’s San Dieguito lagoon restoration project.
 - SANDAG meeting focused on sand replenishment and management strategies regarding potential increases in sand entrainment from sand replenishment projects.
6. **Correspondence** – none
7. **Adjourn to Closed Session** – Counsel Brechtel reported that the board met in closed session and provided direction to its legal counsel to file a claim under the California court claims act to protect the JPA’s right to recover damages for harm that has occurred to the HorsePark segment of the Coast to Crest Trail. No further reportable action was taken.

Chair LaCava adjourned the meeting at 12:31 p.m.

Agenda Item 1

June 21, 2024

TO: JPA Board

FROM: Staff

SUBJECT: Coast to Crest Trail Planning – Sutherland Segment

Staff and the project consultant team led by KTU+A Landscape Architects are making progress planning and designing two gaps in the CTC Trail, the proposed alignment of the Sutherland trail segment and the evaluation of three trail alignment alternatives for the East San Pasqual trail segment (Attachment A). The goal is to design the two trail segments to a shovel-ready stage to be eligible for construction grants.

A slide presentation of the proposed alignment for the Sutherland trail segment will be given at this JPA meeting to explain the process for selecting the trail route, results of site visits and environmental and land use considerations, concepts for specific features of the proposed trail, and next steps.

Sutherland Trail Segment of CTC Trail

The presentation will focus on the Sutherland Trail (Attachment B). The proposed trail alignment begins where the Upper Santa Ysabel CTC Trail meets Black Canyon Road and ends at the CTC trail segment on Santa Ysabel West Preserve. The trail segment is located on land owned by several different entities including the U.S. Forest Service, City of San Diego, the Mesa Grande Band of Mission Indians, San Dieguito River Valley Conservancy and the JPA. In addition to identifying a feasible route, the team is evaluating design features and methods such as crossing Black Canyon Road, grading methods, number and types of drainage crossings, Bloomdale Creek crossing design, locations for an overnight camping facility, and identifying environmental impacts and mitigation requirements. Utilizing the old Black Canyon Road bridge as a trail viewpoint is also proposed. These details are in development and will be used to prepare detailed trail project plans and construction cost estimates. Next steps include increased property owner engagement and environmental analysis required by CEQA.

Consultation and coordination with property owners continued throughout 2023 and is ongoing including:

- Meetings with San Diego Public Utilities staff on multiple occasions to obtain site information, reservoir buffer areas, and provide project updates
- Joint site reconnaissance with PUD in May 2023 and coordinating resources surveys
- Meetings and a joint site visit with Mesa Grande tribal staff regarding JPA's request for a trail easement, discussions ongoing
- Consultation with US Forest Service staff

Agenda Item 1

June 21, 2024

- Project updates with County Parks staff

East San Pasqual Trail Segment of CTC Trail

Three alternative alignments for the East San Pasqual segment are being evaluated and documented in a feasibility study to identify a preferred alignment. The trail segment begins at the San Pasqual Staging area at Bandy Canyon and Highway 78 and ends at the Boden Canyon trailhead where it will connect to the Lower Santa Ysabel CTC Trail segment. Most of the trail alignments are located on land owned by the City of San Diego Public Utilities although a portion crosses a County-owned parcel and are within or adjacent to Caltrans right-of-way. The trail must cross Highway 78 and three different options for crossing the highway are being evaluated. Other considerations include traversing citrus and avocado orchards and steep terrain and areas with sensitive animal species, and ongoing input from City and County staff.

Staff has conducted several site reconnaissance visits with the agricultural lessee and with City PUD staff and progress updates with City and County Parks staff. Coordination is ongoing and all parties will be provided with the final feasibility study.

The feasibility study will identify a preferred trail alignment based on factors including trail user experience, cost, constructability, environmental resource impacts, and land use impacts. The feasibility study is anticipated to be available for review later this summer after additional input is received from Caltrans. Next steps include identifying a preferred alignment, presentations to the CAC and San Pasqual Planning Board, and other interested parties, and environmental surveys and engineering design for the preferred alignment, and CEQA review. Detailed trail plans will be prepared for the preferred alignment only.

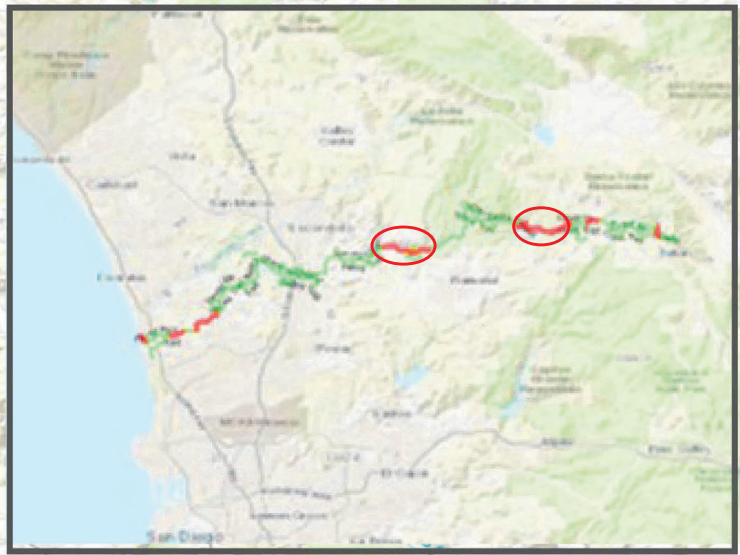
Respectfully submitted,

Shawna Anderson
Executive Director

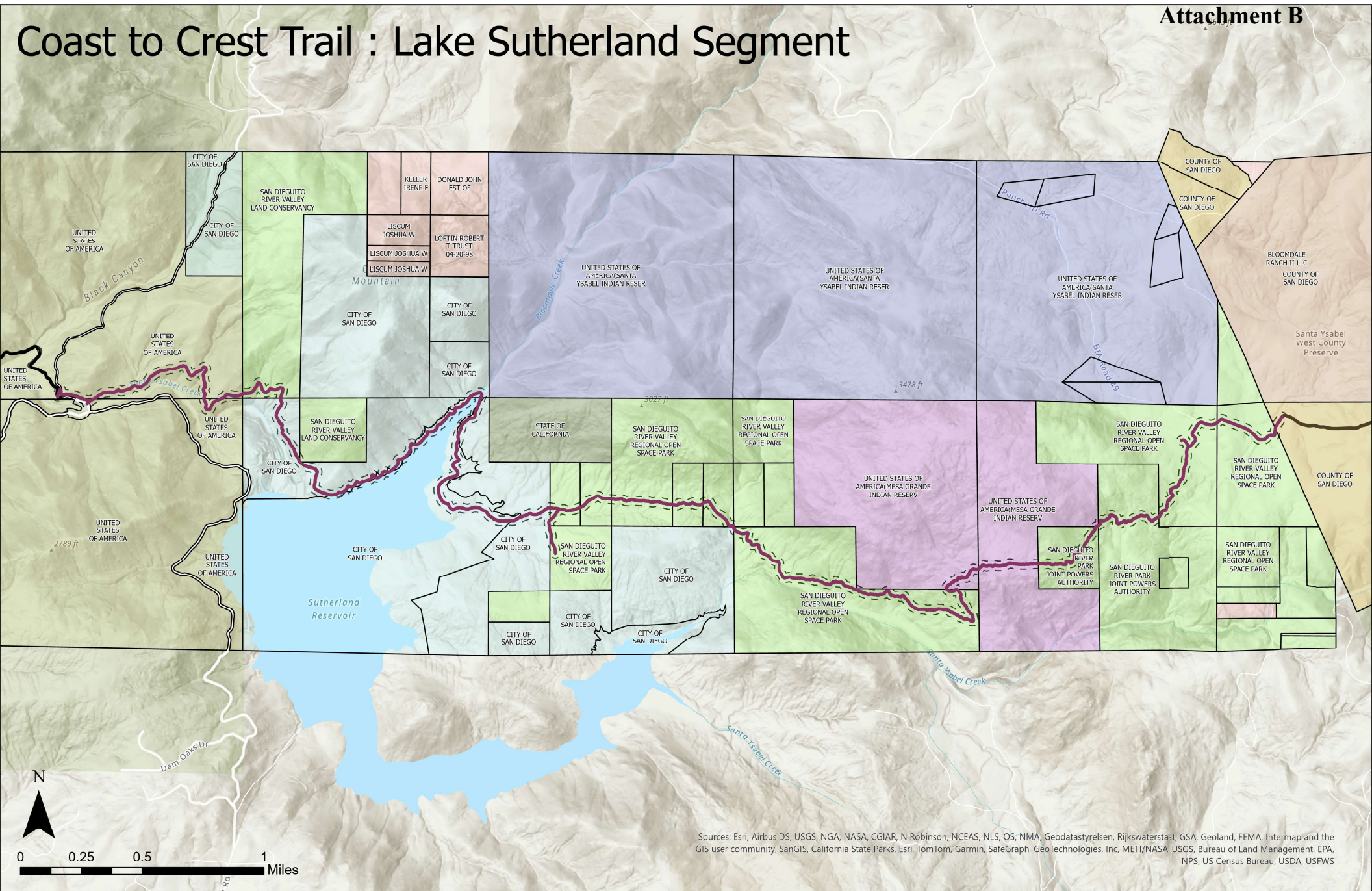
Attachment A: Project Location Map, Coast to Crest Trail Gaps
Attachment B: Sutherland Trail Overview

San Pasqual Valley to Boden Canyon Gap

Lake Sutherland Gap



Coast to Crest Trail : Lake Sutherland Segment



Sources: Esri, Airbus DS, USGS, NGA, NASA, CGIAR, N Robinson, NCEAS, NLS, OS, NMA, Geodastyrelsen, Rijkswaterstaat, GSA, Geoland, FEMA, Intermap and the GIS user community, SanGIS, California State Parks, Esri, TomTom, Garmin, SafeGraph, GeoTechnologies, Inc, METI/NASA, USGS, Bureau of Land Management, EPA, NPS, US Census Bureau, USDA, USFWS